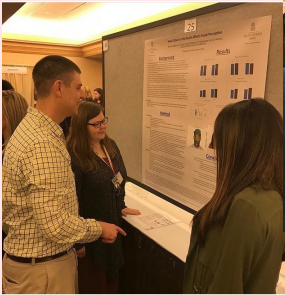


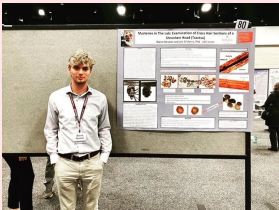


## Research Club Experiences

SEPA Conference 2019,  
Jacksonville, FL



Discover USC 2022 (left)  
and 2019 (below),  
Columbia, SC



SEPA Conference 2018,  
Charleston, SC



Discover USC,  
Columbia, SC, 2025



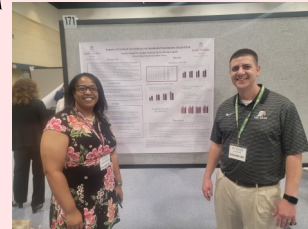
## Research Club Experiences

“Research Club was the first club I joined here on USC Union’s campus. It has given me so many amazing opportunities in the past two years. Some advice I can give to club members or anyone who is interested in joining, is to keep an open mind and always be available to learn. Here in the Research Club, you don’t necessarily have to be a scholar; there is a spot for everyone.”

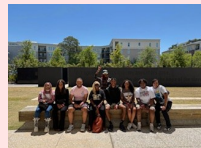
- Za’Kyah Jeter-Walton, *Research Club President*, ‘23-’25



Discover USC 2023, Columbia, SC



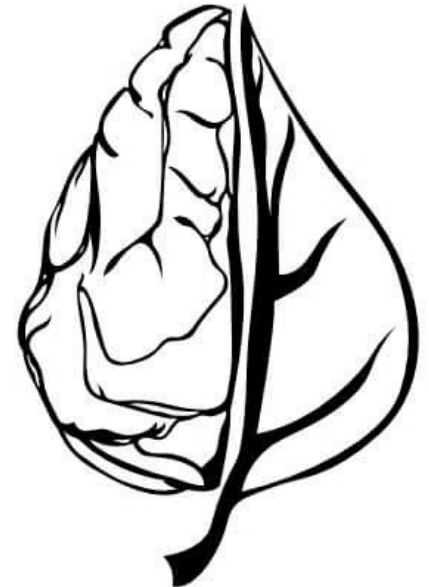
IHSES 2024, San Francisco, CA



SEPA 2023, New Orleans, LA



## Research Club



**Email:** [USCU.Research@gmail.com](mailto:USCU.Research@gmail.com)

**Instagram:** [@USCU.Research](https://www.instagram.com/USCU.Research)

**Faculty Sponsor:** Dr. Randy Lowell

**Student Officers for 2025-2026:**

**President:** June Heitman

**Vice President:** Kaleigh Williams

**Secretary:** Zane Morton

**Social Media:** Kyla Downs-Paprocki



## Graduation with Leadership Distinction (GLD)

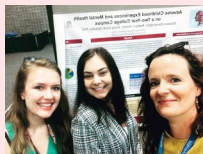
GLD is a distinctive honor given to USC students. Students are recognized at a cording ceremony on the Columbia campus. Students wear these cords at graduation and are recognized as they walk across the stage. You can obtain a GLD on both the associates level and the bachelors level.

To earn a GLD students must:

1. Have a minimum of a 3.0 GPA
2. Participate in beyond-the-classroom experiences
3. Participate in 2-3 enhancements activities
4. Have 3-6 hours of the appropriate courses (listed on website)
5. Present at Discover USC
6. Create an E-portfolio

Further information can be found on USC Columbia Center for Integrative and Experiential Learning webpage.

[Graduation with Leadership Distinction - Center for Integrative and Experiential Learning | University of South Carolina \(sc.edu\)](https://www.usc.edu/center-for-integrative-and-experiential-learning/)



## What does the Research Club do?

- Monthly/bi-monthly meetings
- Presentations for community and campus (students and faculty)
- Fundraising events
- Field trips
- Conference presentation and travel support
- Helps students pair with faculty mentors for research
- Facilitates students' efforts toward GLD in the research or diversity and social advocacy pathways

## Why should you be a member?

- Exposure to the research process, to which smaller campuses do not typically have access.
- Improvement of student and professor relationships.
- Ability to work one on one with professors on research projects.
- Ability to be involved with the campus and community.
- Good additions to resumes and graduate school applications.
- Opportunity to graduate with a GLD in the research or diversity and social advocacy pathway.



## The Research Club's Purpose

The USC Union Research Club encourages participation in beyond-the-classroom experiences in research. This includes facilitating connections between faculty in need of student research assistants and students in search of faculty mentors. This also includes helping students articulate what they have learned and connecting their inside- and outside-the-classroom experiences via presentation of their work across a variety of dissemination platforms. Through these endeavors, we aim to cultivate an atmosphere of intellectual curiosity on the USC Union campus among students, faculty, and staff, which will nurture a more general love of learning. The activities of this organization will also create networking opportunities for its members through which they may encounter new means of collaboration and advancement in their professional and intellectual pursuits.

